

# UNFCCC RACE TO ZERO PLEDGE & PLAN

FOR



Prepared by:



Powered by:



Official Partner Network:



# Carbon Emissions Report

## Table of Contents

1	RACE TO ZERO PLEDGE .....	3
2	Company Overview .....	4
3	Reporting Period .....	4
4	Organisational Boundary .....	4
5	Operational Scopes .....	4
6	Benchmark Year .....	4
7	Carbon Emissions Overview – last 12 months .....	5
8	Analysis by Scope .....	5
9	Intensity Metric Analysis .....	6
10	Business Facility Energy .....	6
11	Scope 3 Emissions .....	7
12	Emission Reductions Targets .....	8
13	Business Commentary.....	9
14	Emissions Data .....	11
15	Data Overview.....	12
16	Standard and Methodology Used .....	13
17	Data Quality / Confidence.....	13
18	Scope 3 Emissions .....	13
19	Offsets .....	13
20	Third Party Verification .....	13
21	Offset schemes (if appropriate) .....	13
22	Glossary.....	14

# Carbon Emissions Report

## 1 RACE TO ZERO PLEDGE

### Declaration of Participation – Community Member Company

Our company recognises the importance of making a full and lasting commitment to reducing the greenhouse gas emissions from our activities, in support of the wider commitment of the world to limit global temperature increases and the impact on the planet.

As a signatory member of the Network Net Zero Community we commit to the following:

1. For our company to achieve Net Zero in line with the Science Based targets set out by the UNFCCC i.e. to achieve Net Zero no later than 2050 and target a 50% reduction in emissions by 2030.
2. To set realistic short- and long-term targets that are designed to achieve our Net Zero commitments.
3. To report the total Greenhouse Gas emissions of our business regularly and for our performance to be part of the Community's annual reporting back to the UNFCCC.

We acknowledge that our commitment will be reported on the Network Net Zero website.

Rocialle Healthcare made its pledge to the Race to Zero via the Network Net Zero Community in June 2023. The record of the pledge can be found at <https://www.futurenetzero.com/un-race-to-zero>

	Year	Potential Year (if ahead of target)
<b>Pledge to be Net Zero</b>	<b>2045`</b>	<b>2045</b>
<b>50% Emissions Reduction</b>	<b>2030</b>	<b>2030</b>

# Carbon Emissions Report

## 2 Company Overview

**Rocialle Healthcare Limited** is a Limited Company registered in England and Wales, company number 11965323, with a head office address of Ty Mynydd, Cwm Cynon Business Park, Mountain Ash, Wales, CF45 4ER.

Year	January 2022 – December 2022
Industry	Hospital activities / Specialists medical practice activities
Average No. of Staff	295
No. of Offices – Owned	2
No. of Offices - Leased	0
No. of Company Vehicles - Owned	1
No. of Company Vehicles - Leased	0

Rocialle Healthcare Limited has supplied healthcare providers with custom procedure packs, single-use instruments, sterile and non-sterile consumable items, PPE and more, all of which are vital to patient care.

## 3 Reporting Period

January 2022-December 2022

## 4 Organisational Boundary

This report has been constructed using the

- Operational Control Approach

## 5 Operational Scopes

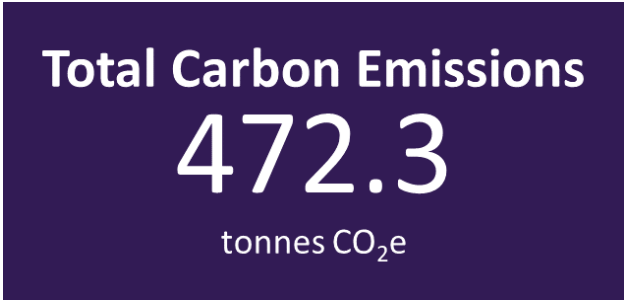
Emissions from Scope 1 & 2 have been measured along with certain Scope 3 emissions. The Scope 3 emissions that have been included are those that have been practical to measure with available data, which are as follows:

- Employee Commuting
- Business Travel
- Transmission & Distribution
- Hotel stays
- Waste

## 6 Benchmark Year

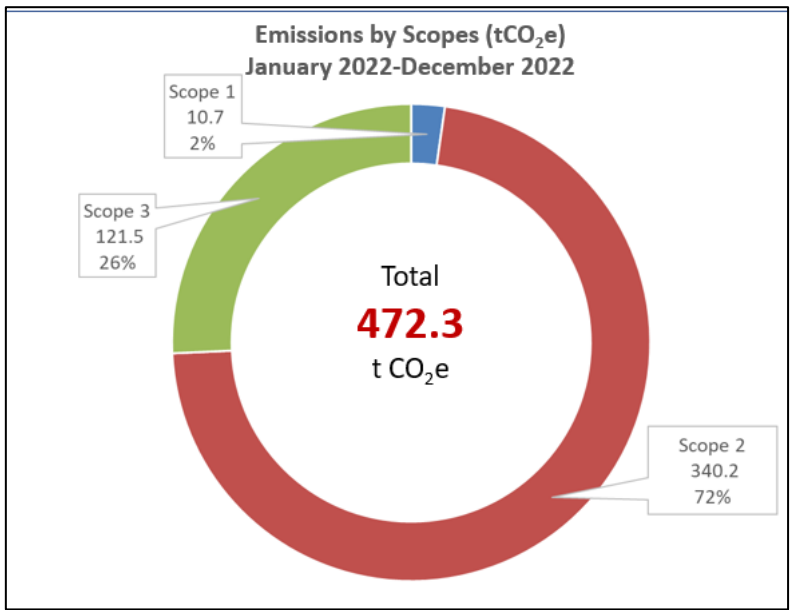
This is the first time the company has measured and reported on its carbon emissions and therefore this is the benchmark year, i.e. from January 2022 to December 2022. The benchmark data is available for the period January 2022 – December 2022.

7 Carbon Emissions Overview – last 12 months



The total calculated emissions for the business in the reporting period were 473.2 t CO<sub>2</sub>e. This is the first year that the business has measured its emissions and as such will be the baseline for future reporting.

8 Analysis by Scope

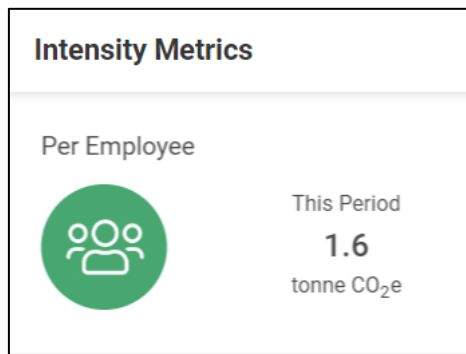


Scope 1 emissions account for 2% of emissions and are 10.7 tCO<sub>2</sub>e in this period. This is the gas used at the two sites / locations which Rocialle have and the tariff is not currently a renewable one. Rocialle will look to investigate this when it is practical to do so.

Scope 2 emissions accounts for 72% of calculated emissions. This is the electricity used at various premises Rocialle have. Scope 2 emissions are 340.2 t CO<sub>2</sub>e in this period. Rocialle currently uses a renewable tariff for its electricity.

Scope 3 emissions accounts for 26% of calculated emissions and includes employee commuting, business travel, and transmission and distribution and waste. Scope 3 emissions are 121.5 tCO<sub>2</sub>e in this period.

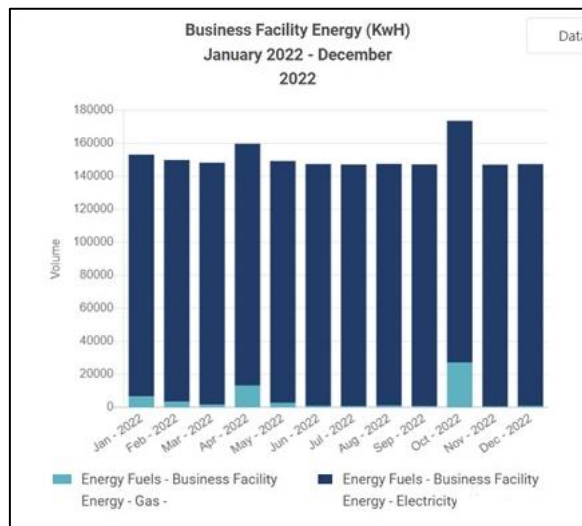
## 9 Intensity Metric Analysis



Rociale Healthcare have chosen to use per employee as an intensity metric. For the reporting period this value is 1.6 t CO<sub>2</sub>e per employee and during this period the average number of staff were 295.

These are used to measure the emissions of its business on an annual basis. As the business grows in the future the likelihood is that more staff will be recruited, more office space will be required, and the number of invoices will increase. Having intensity metrics allows the business to measure the efficiency of that growth from an emissions perspective.

## 10 Business Facility Energy

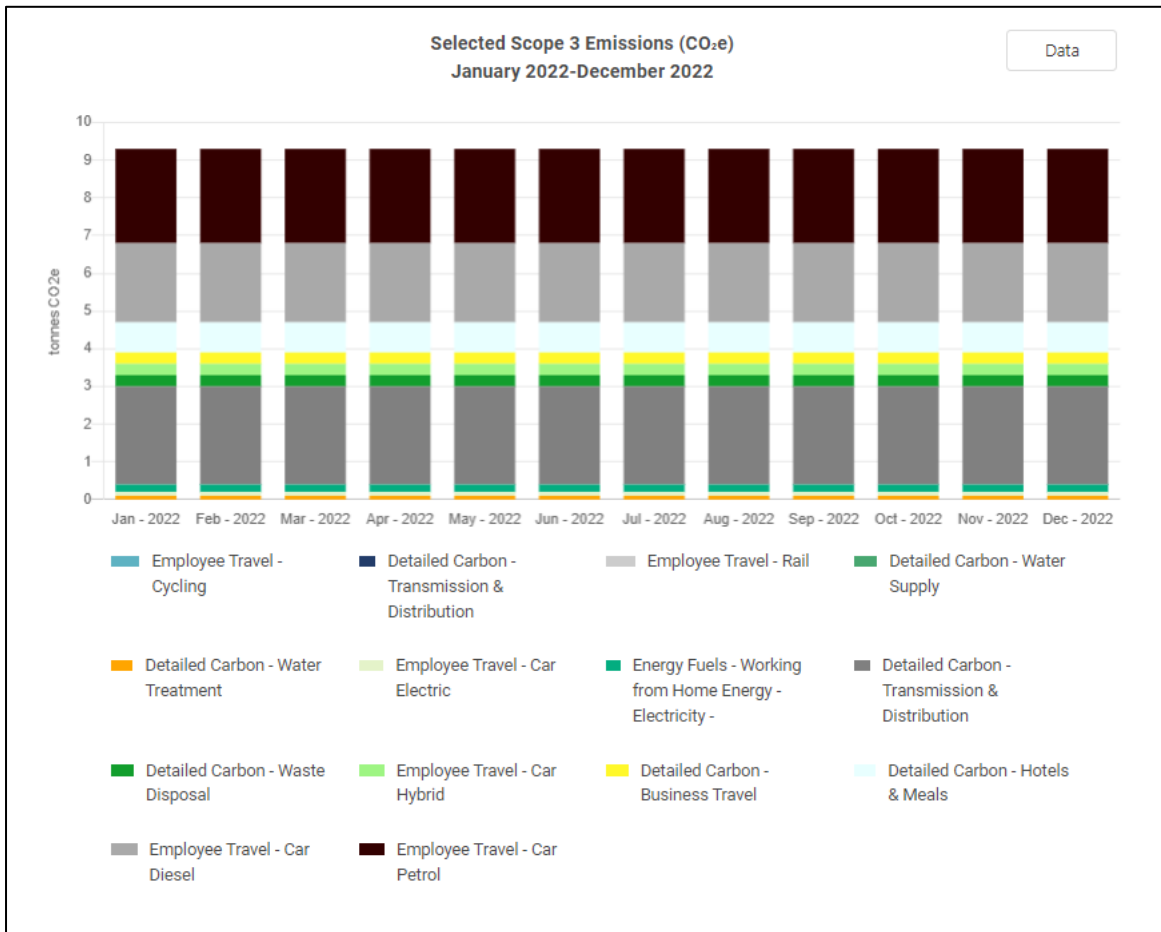


Office energy consumption was sourced based on meter readings and verified by Net Zero International. The office utilised by the company is on a renewable tariff for electricity but not gas. The Company will look to move to new renewable tariffs when practical to do so and will need to have discussions with the landlord about the viability.

The calculated electricity emissions were 340.2 t CO<sub>2</sub>e, and gas emissions were 10.7 t CO<sub>2</sub>e for the reporting period.

The total business facility energy of 350.9 tCO<sub>2</sub>e accounted for approximately 72% of the total calculated emissions of 447.9 t CO<sub>2</sub>e.

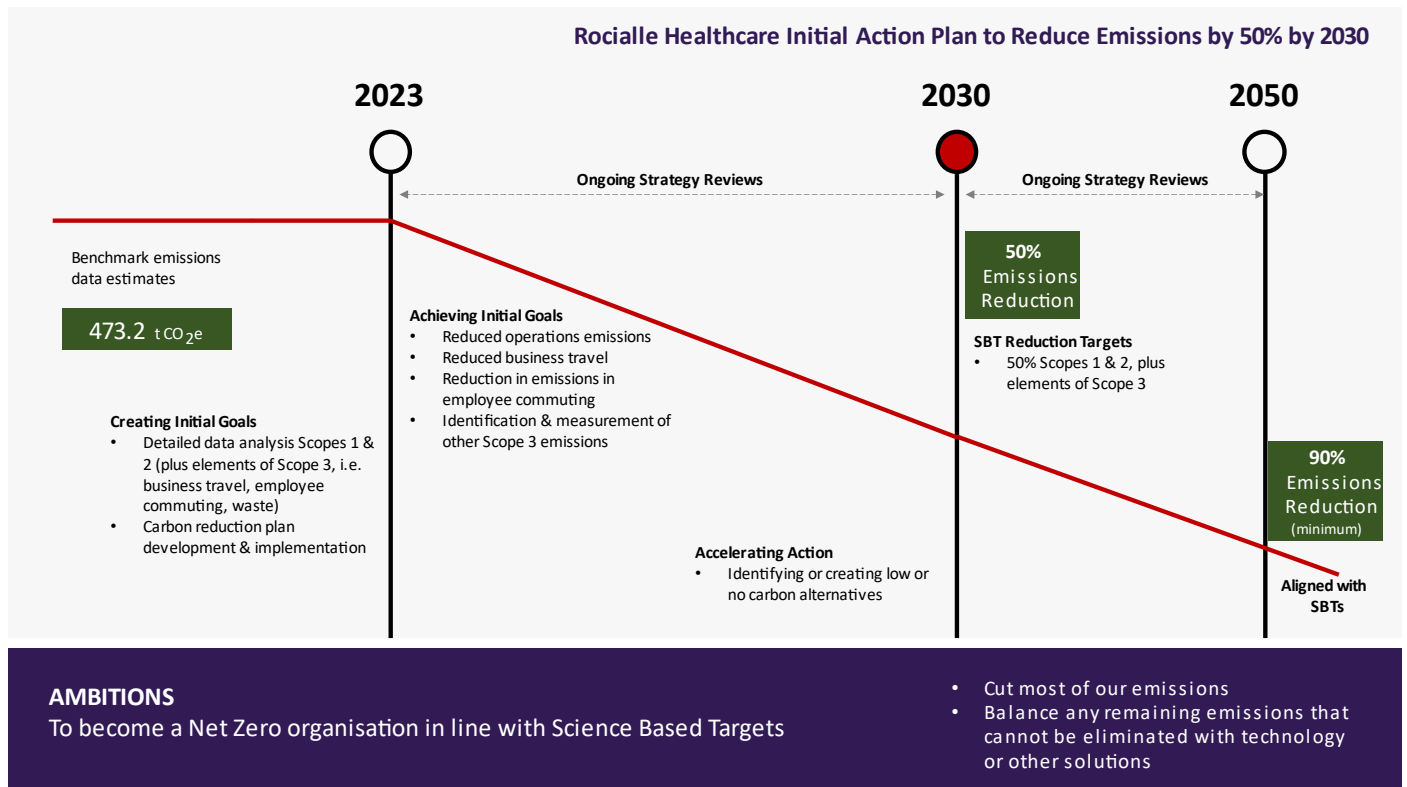
## 11 Scope 3 Emissions



Scope 3 emissions include employee commuting, business travel, transmission and distribution and Hotel stays. Scope 3 accounts for 26% of the overall emissions. Employee surveys have been used to calculate emissions based on average mileage per month. Business Travel including hotel stays have been calculated using spend and then have been converted using EEIO emission factors to convert the spend value into carbon emissions. Waste has been calculated using actual collection data for a 5 month period and then averaged out to calculate the annual emissions.

## 12 Emission Reductions Targets

The following graph summarises the carbon emissions reduction targets.





## Carbon Emissions Report

### 13 Business Commentary

Rocialle Healthcare have undertaken a number of initiatives both prior and during the reporting year which we hope to see the benefit in reducing carbon emissions in future reporting years. Some of these include but are not restricted to;

- 1) **Smart Energy Reduction**  
Annual energy usage has been cut by 33% following optimisation of shift patterns, efficient shutdown procedures, and investment in new technology including motion sensor lighting and an intuitive Climate Control system for energy efficient temperature stores. Energy usage will continue to be monitored and reported as an internal Key Performance Indicator (KPI) with options for further developments to be investigated across the reporting year and beyond.
- 2) **100% Energy Tariff**  
100% of the electricity used is generated from verified renewable energy sources and the commitment to this tariff will continue.
- 3) **100% Recycled Boxes**  
Saving 320 tonnes of cardboard a year, Rocialle Healthcare delivery boxes are made 100% recycled materials. Including changes to instrument boxes, proactive steps are being put in place to transfer more product packaging to 100% recycled cardboard in the next reporting year.
- 4) **Green Product Innovation**  
Saving 189 tonnes of plastic a year, Rocialle Healthcare is the first company to bring the UK National Health Service a range of polyware that is completely made from 100% recycled plastic. The commercial team is committed to supporting customers in switching to these eco-friendly products while continuing to proactively source further environmentally sustainable solutions to add to the existing portfolio of products and services.

Rocialle Healthcare has used the data generated to identify the following aims for the next reporting year;

- 5) **Employee Engagement**  
The aim of this initiative is to educate staff in quarterly sessions, educating staff explaining what Net Zero issues and how they can (staff) impact on our carbon emissions. By educating staff they will be more conscious about decisions that they make that can impact or reduce our carbon emissions.
- 6) **Sustainable Travel Policy**  
Rocialle Healthcare will embed a sustainable travel policy in the next year. The aim of the policy is to encourage and educate staff to take lower carbon travel options such as public transport, cycling, walking or car sharing. This initiative will be done in line with the Employee Engagement process listed above as by educating our employees this will help them be more conscious about commuting and travel.
- 7) **Sustainable Procurement Policy**  
Rocialle Healthcare will furthermore embed and develop a sustainable procurement policy within the business to make sustainability a key consideration when purchasing key products and services. Rocialle Healthcare as well as evaluating price and quality from suppliers would look to understand their commitment to sustainability including asking for their carbon reduction plan and their targets during the contractual duration asking for reporting information on a quarterly basis.
- 8) **Solar Panels**  
Generating an estimated annual output of 386,000 kW and reducing Co2 emissions in exporting to the grid, investment is committed to installing 928 solar panels, covering 85% of the current roof space at the South Wales Head Office site.
- 9) **Zero Waste to Landfill**  
With the creation of segregated recycling schemes across company sites and changes to general waste management systems, zero waste to landfill is targeted from business operations.
- 10) **Supply Chain Efficiencies**  
Working in collaboration with customers and suppliers, changes to units of measure, consolidated orders and influencing of buying patterns is being evolved to ensure more efficient and less frequent deliveries, without any detriment to service levels.

## Carbon Emissions Report

**11) Company Vehicles**

Further EV charging points are planned for installation and there is commitment to purchasing electrical vehicles where required.

**12) Cross-Functional Working Group**

A dedicated working group of key functional representatives from across the business is planned to formulate a medium and long-term plan of environmentally sustainable initiatives, driving implementation and championing ownership. Progress reports will be a standing agenda item at monthly board meetings.

Aligned with the deliverables above, Rocialle Healthcare will be seeking to achieve ISO 14001 (environmental management system) certification.

## Carbon Emissions Report

### 14 Emissions Data

The data contained in the table below represents total emissions calculated and is consistent with SECR requirements. All sources of emissions that have been measured are included in the totals below. Emissions from key activities are summarised in the previous sections.

	SECR Status	Current Reporting Year January 22 – December 22
Energy consumption used to calculate emissions Electricity Scope 2 - UK & Offshore (kWh)	Mandatory	1,759,045
Energy consumption used to calculate emissions – Global, excluding UK & Offshore (kWh)	Mandatory	N/A
Basis of Energy reporting (Location or Market)		Market
% of total energy sourced from certified renewable sources		0%
Emissions associated with energy consumption - UK, Offshore & Global (tCO <sub>2e</sub> )		340.2
Emissions from activities for which the company is responsible including combustion of fuel & operation of facilities - <b>Scope 1</b> (tCO <sub>2e</sub> )	Mandatory	10.7
Emissions from purchase of electricity, heat, steam and cooling purchased for own use - <b>Scope 2</b> (tCO <sub>2e</sub> )	Mandatory	340.2
<b>Total Scope 1 &amp; 2 Emissions (tCO<sub>2e</sub>)</b>	<b>Mandatory</b>	<b>350.9</b>
<b>Intensity Ratio: per employee - Scope 1 &amp; 2 (tCO<sub>2e</sub>)</b>	<b>Mandatory</b>	<b>1.19</b>
Emissions from upstream activities out of operational control - <b>Scope 3</b> (tCO <sub>2e</sub> )	Optional	121.5
Emissions from use of sold products and services out of operational control - <b>Scope 3</b> (tCO <sub>2e</sub> )	Optional	None included
<b>Total Gross Scope 3 Emissions (tCO<sub>2e</sub>)</b>	<b>Optional</b>	<b>121.5</b>
<b>Total Scope 1, 2 &amp; 3 Emissions (tCO<sub>2e</sub>)</b>	<b>Optional</b>	<b>472.3</b>
Intensity ratio tCO <sub>2e</sub> (gross Scope 1, 2 & 3) per employee	Optional	1.68
Carbon offsets (tCO <sub>2e</sub> )	Optional	0
<b>Total Annual Net Emissions (tCO<sub>2e</sub>)</b>	<b>Optional</b>	<b>472.3</b>

## Carbon Emissions Report

### 15 Data Overview

Data Details		2022		
Emission Type	Scope	Volume tCO2e	Data Source (2022)	Data Confidence
<b>Energy</b>				
Electricity	2	340.2	Meter Readings	High
Gas	1	10.7	Meter Readings	High
<b>Business Travel</b>				
Car Petrol	3	7.6	Company Data	Medium
<b>Employee Commuting</b>				
Car Petrol	3	30.3	Employee Commuting Survey	Medium
Car Diesel	3	25.3	Employee Commuting Survey	Medium
Car Hybrid	3	3.5	Employee Commuting Survey	Medium
Bus	3	2	Employee Commuting Survey	Medium
Car Electric	3	1.4	Employee Commuting Survey	Medium
<b>Other Emissions Calculated</b>				
Transmission & Distribution	3	31.1	Meter Readings (Electricity)	High
Hotel & Meals	3	9.7	Company Spend Data then converted using EEIO emissions factors	Medium
Business Travel	3	3.9	Company Spend Data then converted using EEIO emissions factors	Medium
Waste Disposal	3	3.3	Company Waste collection data	Medium
WfH Electricity	3	2.2	Calculation based on 3kwh per person per day	Medium
Water Supply	3	0.4	Meter Readings	High
Water Treatment	3	0.7	Meter Readings	High
		<b>472.3</b>		

## 16 Standard and Methodology Used

Rociale Healthcare categorises its Greenhouse Gas (GHG) Emissions as Scope 1, 2 or 3 as referred to in the WBCSD – WRI Greenhouse Gas Protocol (revised edition, dated March 2014). Emissions in Carbon Dioxide equivalent (CO<sub>2</sub>e) for all scopes are calculated using the conversion factors listed in BEIS Greenhouse Gas Conversion Factors for the relevant 12-month period over which the Carbon Footprint is calculated. Procured renewable electricity and gas is calculated in accordance with the WBCSD – WSI Scope 2 Guidance on procured renewable energy (2015).

## 17 Data Quality / Confidence

The data used to generate this report has been collected from various sources from both within the company and using assumptions gathered by Net Zero International. These emissions have been converted to CO<sub>2</sub>e using the CBN Expert Dashboard. In all cases CBN Expert has used the Conversion Factors published by BEIS/Defra for the relevant period.

## 18 Scope 3 Emissions

Rociale Healthcare is committed to measure and act to reduce its emissions in all 3 Scopes. This report reflects the amount of Scope 1 and 2 emissions, plus the Scope 3 emissions that it has been feasible to calculate. Rociale Healthcare remains committed to work with its entire supply chain to ensure as much of its Scope 3 emissions can be accurately measured and to develop actions that target long term reductions in this emissions category.

## 19 Offsets

As part of the commitment of Rociale Healthcare to target reductions in its GHG emissions and, ultimately, attain Net Zero the company will review and report all offsetting that it enters. All offsetting options will be considered and reported included, formally certificated schemes (e.g., Gold Standard) as well as more informal schemes. Where offsetting is done against informal schemes, details of the calculation logic will be reported.

## 20 Third Party Verification

The data in this report has been produced using the CBN Expert dashboard and the figures have been certified under the future Net Zero Standard. The certification and licence number for the period for this report is shown here.

## 21 Offset schemes (if appropriate)

Scheme Name	Details (including weblinks)

Signed on behalf of Rociale Healthcare Limited

Name: Simon Loose



Position: **Chief Executive Officer**

Signed on behalf of Net Zero International

Name: **David Hawes**



Position: **Co-Founder**

## Carbon Emissions Report

### 22 Glossary

<b>Benchmark Data</b>	The chosen 12-month period that sets the calculated emissions that need to be mitigated and/or offset.
<b>Carbon Reduction</b>	Reduction in measured CO <sub>2</sub> e emissions
<b>Carbon Reduction Plan</b>	Plan to reduce CO <sub>2</sub> e emissions over a period of time, updated annually
<b>Carbon Emissions (Gross)</b>	CO <sub>2</sub> e emissions from Company activities
<b>Carbon Emissions (Net)</b>	CO <sub>2</sub> e emissions from Company activities minus verified carbon offsets the Company purchases
<b>Carbon Neutral</b>	When emissions are fully offset including those emissions that could be mitigated.
<b>Carbon Offsets</b>	A removal or reduction of carbon emissions through a verified scheme.
<b>CO<sub>2</sub>e</b>	All greenhouse gases expressed in terms of Carbon Dioxide equivalent (CO <sub>2</sub> e) for consistency of reporting.
<b>GHG Protocol</b>	Greenhouse Gas Protocol <a href="https://ghgprotocol.org/">https://ghgprotocol.org/</a>
<b>Greenhouse Gases</b>	Carbon Dioxide (CO <sub>2</sub> ), Methane (CH <sub>4</sub> ), Nitrous Oxide (N <sub>2</sub> O), Chlorofluorocarbons (CFCs and HCFCs), Hydrofluorocarbons (HFCs), Perfluorocarbons (PFCs), Sulphur Hexafluoride (SF <sub>6</sub> )
<b>Greenhouse Gas Conversion Factors</b>	Annually published conversion factors normally published by relevant government departments. Converts activity into CO <sub>2</sub> e emissions.
<b>Greenhouse Gas Emissions (GHG)</b>	Gases in the atmosphere that absorb and radiate heat
<b>Intensity Metric/Ratio</b>	A metric that measures carbon emissions per relevant unit of activity in a business.
<b>Market Reporting v Location Reporting</b>	Market is based on specific tariffs. Location is based on the country from which you are reporting.
<b>Net Zero</b>	GHG emissions are mitigated and those that cannot are offset
<b>Renewable Tariff</b>	An energy tariff that is 100% powered by renewable energy and is certified.
<b>SBT</b>	Science Based Targets – reducing emissions by 50% by 2030 and by 90% by 2050 and offsetting the remaining amount.
<b>Scope 1</b>	The fuels that are burnt (gas, transport the company owns, refrigerant gasses)
<b>Scope 2</b>	The energy that is bought (electricity from the grid, purchased heat)
<b>Scope 3</b>	Emissions embedded in everything a company buys and emitted as a consequence of everything a company sells.
<b>SECR</b>	Streamlined Energy & Carbon Reporting
<b>tCO<sub>2</sub>e</b>	Metric tonnes of CO <sub>2</sub> equivalent emitted.
<b>UNFCCC</b>	United Nations Framework Convention on Climate Change
<b>UN Race To Zero</b>	United Nations campaign mobilising organisations to commit to reaching Net Zero no later than 2050.
<b>WBCSD</b>	World Business Council for Sustainable Development <a href="https://www.wbcsd.org/">https://www.wbcsd.org/</a>
<b>WRI</b>	World Resource Institute <a href="https://www.wri.org/">https://www.wri.org/</a>